

Tire Cutters

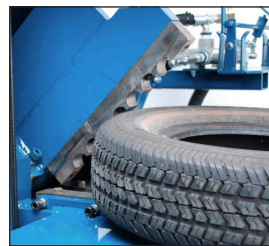
BRAND  
MADE IN USA

Designed to cut all passenger, light and heavy trucks tires; as well as, "super singles" and those large and difficult farm and construction tires.

- Depending on the model, they can cut from 40 to 120 tires per hour.
- Allow cut tires to be stocked with in each other (nested) which reduces tire volume up to 75%.
- Reduces transportation costs substantially by transporting a more dense load of tires.
- Prevents tires from accumulating water, eliminating common breeding grounds for mosquitoes.
- Reduces regulatory problems concerning tires.
- Available models: Electric, Gas and Diesel.
- 12-month warranty.

Specifications for each model are detailed on next pages.

Please, contact us if you need more information or a detailed quote.



January 2018

TC-50 Tire Cutter

Designed to cut all passenger and light truck tires.

TC-50 EP

3 HP, 220v single phase motor
5 HP, 3-phase motor optional.

TC-50 GP

9 HP, B&S gas motor

- Can cut passenger and light truck tires into 4 pieces at a rate of up to 60 tires per hour.
- Allow cut tires to be stocked with in each other (nested) which reduces tire volume up to 75%.
- Reduces transportation costs substantially by transporting a more dense load of tires.
- Prevents tires from accumulating water, eliminating common breeding grounds for mosquitoes.
- Perfect for tire shops who want to handle their own tire disposal.
- Small foot print allows this tire cutter to easily fit in any work area.
- The patented shear blades works on a zero clearance design for a clean cut. This greatly extends the blade life compared to other designs.
- Two-handle valve system keeps operator's hand away from the blades while cutting for added safety.
- Easy to operate, low maintenance, dependable and designed for years of service.
- Available models: Electric and Diesel.
- 12-month warranty.
- Dimensions: 45" x 68" x 63" high.
- Shipping weight: 1,400 lbs.

REQUEST PRICE



TC-50 EP



9 HP, B&S gas motor



Please, contact us if you need more information or a detailed quote.

TC-55 Tire Cutter

Designed to cut high volume of passenger and light truck tires quickly; it is one of the most powerful tire cutting units on its category.

TC-55 EP

10 HP, 220/440 V, 3-Phase motor.

TC-55 GP

18 HP B&S gas motor with electric start.

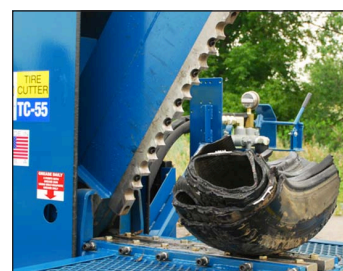
- Tires measuring 17" in diameter and smaller can be cut into 4 pieces at a rate of up to 90 per hour.
- Tires measuring 18" and 19" in diameter can be cut in 4 pieces at a rate of up to 70 per hour.
- Faster than its little brother the TC-50 Tire Cutter.
- Allow cut tires to be stocked with in each other (nested) which reduces tire volume up to 75%.
- Reduces transportation costs substantially by transporting a more dense load of tires.
- Prevents tires from accumulating water, eliminating common breeding grounds for mosquitoes.
- Perfect for tire shops who want to handle high volumen of tires quickly.
- The small footprint allows this workhorse to easily fit in any work area.
- Two-handle valve system keeps operator's hand away from the blades while cutting for added safety.
- Easy to operate, low maintenance, dependable and designed for years of service.
- Available models: Electric and Gas.
- 12-month warranty.
- Dimensions: 77" x 62" x 70" high.
- Shipping weight: 1,962 lbs.

REQUEST PRICE

Please, contact us if you need more information or a detailed quote.



TC-55 EP



TC-100 Tire Cutter

Designed to cut passenger, light and heavy truck tires; including "super singles".

TC-100 EP

10 HP, 220/440 V, 3-Phase.

TC-100 GP

18 HP B&S gas motor with electric start.

TC-100 DP

Diesel Kubota Motor.

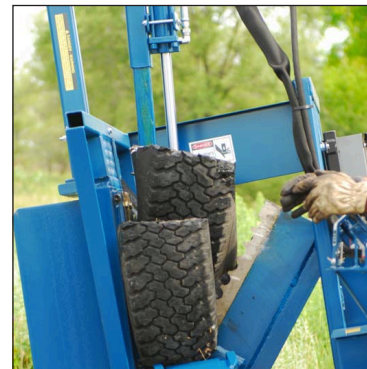
- Heavy truck tires can quartered at a rate of up to 40 per hour.
- Passenger and light truck tires can be cut into 4 pieces at a rate of up to 120 per hour using the optional **TC-100-14 passenger tire compressor**.
- Allow cut tires to be stocked with in each other (nested) which reduces tire volume up to 75%.
- Reduces transportation costs substantially by transporting a more dense load of tires.
- Prevents tires from accumulating water, eliminating common breeding grounds for mosquitoes.
- Can be used by tire shops, services stations, landfills, auto salvage yards and retread plants.
- The patented double shear blade system is easily adjustable to maintain a zero clearance between the blades for a clean cut. This eliminates blade separation and greatly extends blade life.
- Portable unit that can be easily transported to tire salvage piles.
- Includes 2" ball hitch and safety chains. Trailer lights are optional.
- Easy to operate, low maintenance, dependable and designed for years of service.
- Available models: Electric, Gas and Diesel.
- 12-month warranty.
- Dimensions: 67" x 119" x 72" high.
- Shipping weight: 3,800 lbs.

REQUEST PRICE

Please, contact us if you need more information or a detailed quote.



TC-100 EP



TC-100-14

Tire Compressor (optional)

Designed to use con **TC-100**. Will cut in 4 pieces passenger and light trucks at a rate of up to 120 tires per hour

TC-125 Tire Cutter

This heavy-duty tire cutter is specifically designed to cut large and difficult tires, including farm and construction tires.

TC-125 EP

30 HP, 3-Phase motor

TC-125 DP

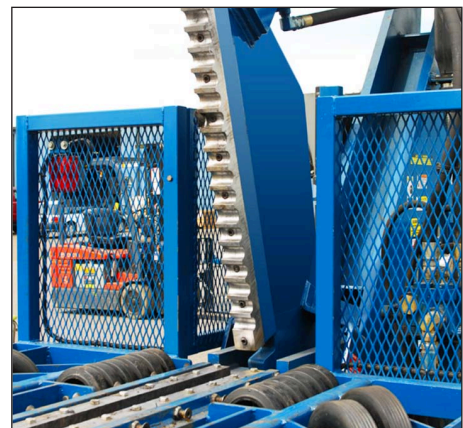
Diesel Kubota Motor



TC-125 EP

- Can cut any tire with a sidewall width dimension of 24" or less and 20 ply or less.
- Allow cut tires to be stocked with in each other (nested) which reduces tire volume up to 75%.
- Reduces transportation costs substantially by transporting a more dense load of tires.
- Prevents tires from accumulating water, eliminating common breeding grounds for mosquitoes.
- Large shear blades operation with complete safety.
- Unique design features give complete operator safety and ease of operation.
- Reduces regulatory problems concerning tires.
- Available models: Electric and Diesel.
- 12 month warranty.
- Dimensions: 187" x 60" x 99" high.
- Shipping weight: 6,800 lbs.

REQUEST PRICE



Please, contact us if you need more information or a detailed quote.