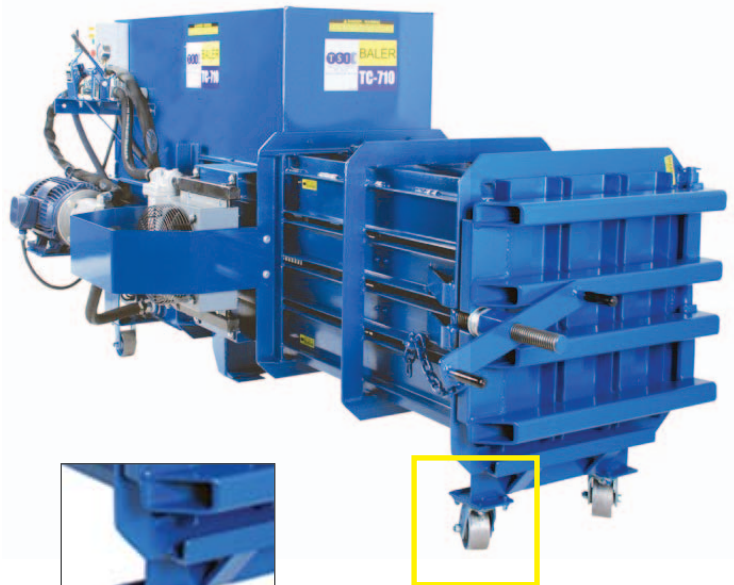


## “Mini” Compactor Baler, Horizontal, Mobile

BRAND    
MADE IN USA

- Accepts plastic, PET and HDPE bottles and containers, aluminum cans, paper and carton (OCC), textile, polystyrene containers, etc.
- Offers 45,000 lbs. of crushing force.
- Reduces aluminum cans or plastic bottles into a dense 20" x 20" x 36" bale weighing approximately 150 lbs. allowing to save on transport and storage costs.
- Standing only four feet high the convenient opening in the top of the TC-710 provides for easy loading while the finished bale is removed from the bottom compartment.
- Mobile and conveniently fits into a truck bed or trailer, which can be used curbside, or in-plant.
- The in-plant unit can be mounted on casters. The TC-710 Baler provides flexibility for processing of waste materials on-site or en route.
- 12-month warranty



Wheels allow to move the unit to different work areas.

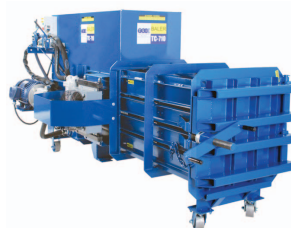


**Model TC-710**  
**“MINI” COMPACTOR BALER,**  
**HORIZONTAL**

*Prices, Accessories, Model Options and Technical Specifications are detailed on the next page.*




***Please, contact us if you need more information or a detailed quote.***

## MODELS AND TECHNICAL SPECIFICATIONS



MODELS	TC-710 1PH	TC-710 EP	TC-710 GP
Model Price	<b>REQUEST PRICE</b>	<b>REQUEST PRICE</b>	<b>REQUEST PRICE</b>
Bale Size	20 x 20 x 36 inch / 50 x 50 x 90 cm	20 x 20 x 36 inch / 50 x 50 x 90 cm	20 x 20 x 36 inch / 50 x 50 x 90 cm
Average Bale Weight	150 lb / 68 kg	150 lb / 68 kg	150 lb / 68 kg
Operation / Power	10 HP, 1 Phase electric motor	10 HP, 3 Phase electric motor 220/440	18 HP, gas engine with electric start
Total Platten Force	45,160 lb / 20,527 kg	45,160 lb / 20,527 kg	45,160 lb / 20,527 kg
System Pressure	2,300 psi	2,300 psi	2,300 psi
PSI Platten	113 lb / 45 kg	113 lb / 45 kg	113 lb / 45 kg
Cylinder Bore and Stroke	5 x 30 inch / 13 x 76 cm	5 x 30 inch / 13 x 76 cm	5 x 30 inch / 13 x 76 cm
Cycle Time	20 sec.	20 sec.	20 sec.
Oil Cooler	Standard	Standard	Standard
Baler Size Length x Width x Height	105 x 42 x 47 inch / 267 x 107 x 119 cm	105 x 42 x 47 inch / 267 x 107 x 119 cm	105 x 54 x 47 inch / 267 x 137 x 119 cm
Baler Weight	2,030 lb / 800 kg	2,030 lb / 800 kg	2,030 lb / 800 kg
Shipping Packaging	Wooden Box	Wooden Box	Wooden Box
Shipping Size Length x Width x Height	111 x 65 x 72 inch / 282 x 165 x 183 cm	111 x 65 x 72 inch / 282 x 165 x 183 cm	111 x 65 x 72 inch / 282 x 165 x 183 cm
Shipping Weight	3,200 lb / 1,455 kg	3,200 lb / 1,455 kg	3,200 lb / 1,455 kg

## OPTIONAL ACCESSORIES

ACCESSORY	PART No.	DESCRIPTION	UNIT	PRICE
	5557	<b>SLIDE RAILS</b> Allow the finished bales to be easily slid out from the baler. The elevated bales allow for easier handling and removal of bales. Quick and easy to install. Dimensions: 40" x 8" x 6" – Weight: 150 lbs.	1	REQUEST
	5954	<b>DRIP PAN</b> Keep your floors and work areas clean, dry and safe when using the TC-710 Baler with the optional 5954 Drip Pan. Designed to work with all TC-710 Balers and installs quickly. Catches all fluids that are discharged during the compacting process. Easily removed for draining and cleaning. Dimensions: 36" x 22" x 2" – Weight: 250 lbs.	1	REQUEST
	6237	<b>HOPPER CHUTE</b> Designed and engineered to increase the loading capacity of the TC-710. The Hopper Chute can be retrofitted to all TC-710 Balers with some modifications Dimensions: 17.5" x 41" x 52.5" – Weight: 165 lbs.	1	REQUEST

NOTE: Any price shown refers to product only. Please, request a detailed quote.

**For more information or for a detailed quote, please select the model and accessory of preference.**